

SolventTrak Solvent Recycler

Save Money by Recycling up to 90% of your Solvent

The rising price of acetonitrile means there has never been a better time to save money by recycling your HPLC solvent.

SolventTrak is a solvent conservation system designed to recycle uncontaminated solvents used in isocratic HPLC systems – it can recover up to 90% of solvent for re-use, thus saving you on the cost of ordering more solvents and also reducing the need for solvent disposal.

SolventTrak can recycle enough solvent to pay for itself within two months!



SolventTrak vs Traditional solvent recycling systems

Traditional recycling systems use a fixed voltage level (or threshold above baseline) that must be exceeded before peaks can be detected. If the baseline changes, new settings must be applied or contaminants may be recycled instead of being sent to waste. Conversely, pure solvent may be sent to waste instead of being recycled.

SolventTrak incorporates a unique integration algorithm to accurately detect peaks in the eluent. This ensures all contaminants are eliminated, even if chromatography system conditions cause the baseline to drift up or down. The clean, uncontaminated solvent is sent back to the reservoir for recycling.

*The winner: **SolventTrak***

Key benefits

- Unique **peak detection algorithm** accurately defines peaks and diverts them to waste
- **Installs easily** into any isocratic LC system
- Saves up to **90%** of solvent consumption
- **Reduces** solvent disposal costs
- **Pays for itself** in 60 to 90 days
- **Easy to use** — no complex programming
- Returns **reliably clean solvent** to mobile phase reservoir
- Automatic **performance validation**
- NIST traceable **calibration certificate** included as standard

How SolventTrak works

The signal from any HPLC detector is connected to the SolventTrak. The SolventTrak monitors and continuously displays the voltage level on a large, easy-to-read LCD.

SolventTrak automatically detects eluting peaks and sends them to waste using an inert solvent diverter valve. All clean, uncontaminated solvent is sent back to the reservoir for reuse.

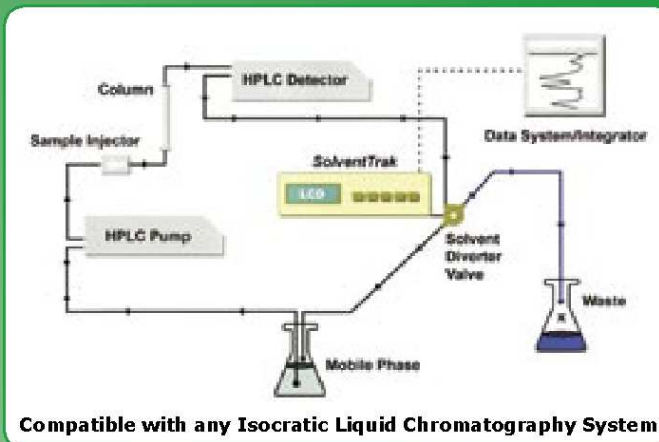
When a peak is detected, it is indicated on the LCD display and by an audible alarm (which can be disabled). The peak detection sensitivity can be adjusted by changing the peak width and peak threshold parameters. This is easy to do using the buttons on the front of the SolventTrak.

Easy setup, testing and validation

The SolventTrak easily installs into any isocratic HPLC system. It can place a tick mark (*peak marker*) on the output signal to show exactly where peaks have been detected and sent to waste. This is useful for setup, testing and validation.



Rear view



Compatible with any Isocratic Liquid Chromatography System

SPECIFICATIONS

Peak Detection

<i>Signal input range:</i>	-1.000 to +1.000V
<i>Sampling rate:</i>	200Hz, continuous during operation
<i>Number of inputs:</i>	1
<i>Peak width range:</i>	User-settable: 1, 5, 15, 30, 45, 60, 75, 90, 105, 120, 150, 180, 210, 240, 270, 300 seconds
<i>Peak slope range:</i>	User-settable: 15 - 14,400
<i>Diverter valve delay timer:</i>	User-settable: 0 - 99 seconds, 1 second increments
<i>Peak waste/valve open marker:</i>	Defeatable, duration 0.1 seconds. Tick mark height is user adjustable
<i>Contact closure outputs:</i>	Normally open/normally closed Peak waste/valve open, duration 1 second Clean complete
<i>Contact closure/TTL inputs:</i>	Enable/disable autozero, duration 1 second Enable peak waste/valve override (continuous) Clean (start cleanup cycle)
<i>Peak-to-waste/valve open indicators:</i>	LCD display status, 1 second audio beep (can be turned off)

Diverter Valve

<i>Type:</i>	Solenoid controlled, 3-way, high efficiency, zero dead volume
<i>Wetted surfaces:</i>	All internal PTFE
<i>Mounting ports:</i>	¼ - 28 flat bottom (valve can be mounted in any orientation)
<i>Operating pressure:</i>	Up to 30psi (2bar)
<i>Response time:</i>	5ms (approx)

Physical Characteristics

<i>Environment:</i>	4.4 - 32.2°C, 10% to 60% relative humidity (non-condensing)
<i>Dimensions (W x H x D):</i>	230mm x 83mm x 260mm (9" x 3.75" x 10")
<i>Weight:</i>	3.15kg
<i>Power:</i>	100 - 240VAC, 50/60Hz, self-switching

Description	Part No.
SolventTrak HPLC Solvent Recycler	100-300

Distributed by:



Carl Stuart Limited

ADVANCED APPLIED TECHNOLOGIES

Contact Us:

Ir Ph: 01 4523432

UK Ph: 08452 30 40 30

Web: www.carlstuart.com

Email: info@carlstuart.com